

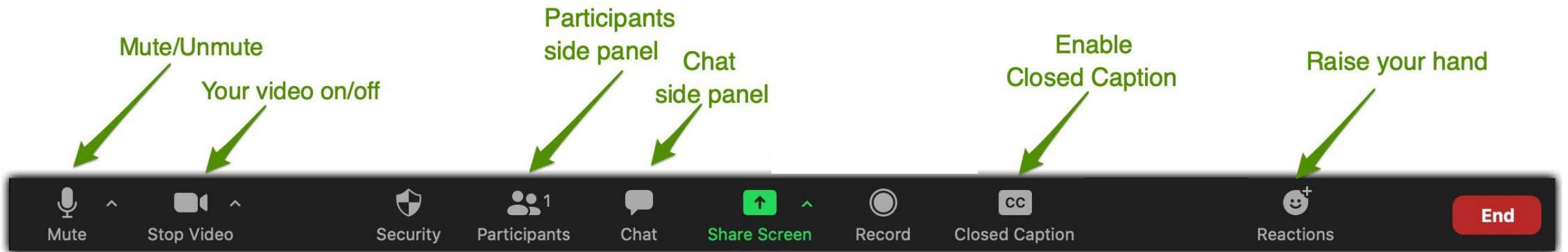


HUMAN CENTERED DESIGN

JANUARY 19, 2023

CONTROL PANEL

THIS WEBINAR IS BEING RECORDED





LAND ACKNOWLEDGEMENT

• We acknowledge that we are on the traditional territory and homelands of California Native Peoples. These Nations include over 120 federally recognized tribes and many other non-recognized tribes that are all very culturally diverse. We thank these Nations for their generosity, and we keep them in our hearts and thoughts as we are in this space today, this week, and every day.

<https://native-land.ca/>



OPENING CIRCLE

Please type in your name, pronouns, agency and location

- AN APPROACH TO PREVENTION

that starts with people and ends with innovative solutions that are tailor-made to suit their needs.

- IDENTIFY

community centric prevention strategies.

"When you understand the people you're trying to reach—and then design from their perspective—not only will you arrive at unexpected answers, but you'll come up with solutions that they'll embrace."

- OPPOSITE THE FRAMEWORK

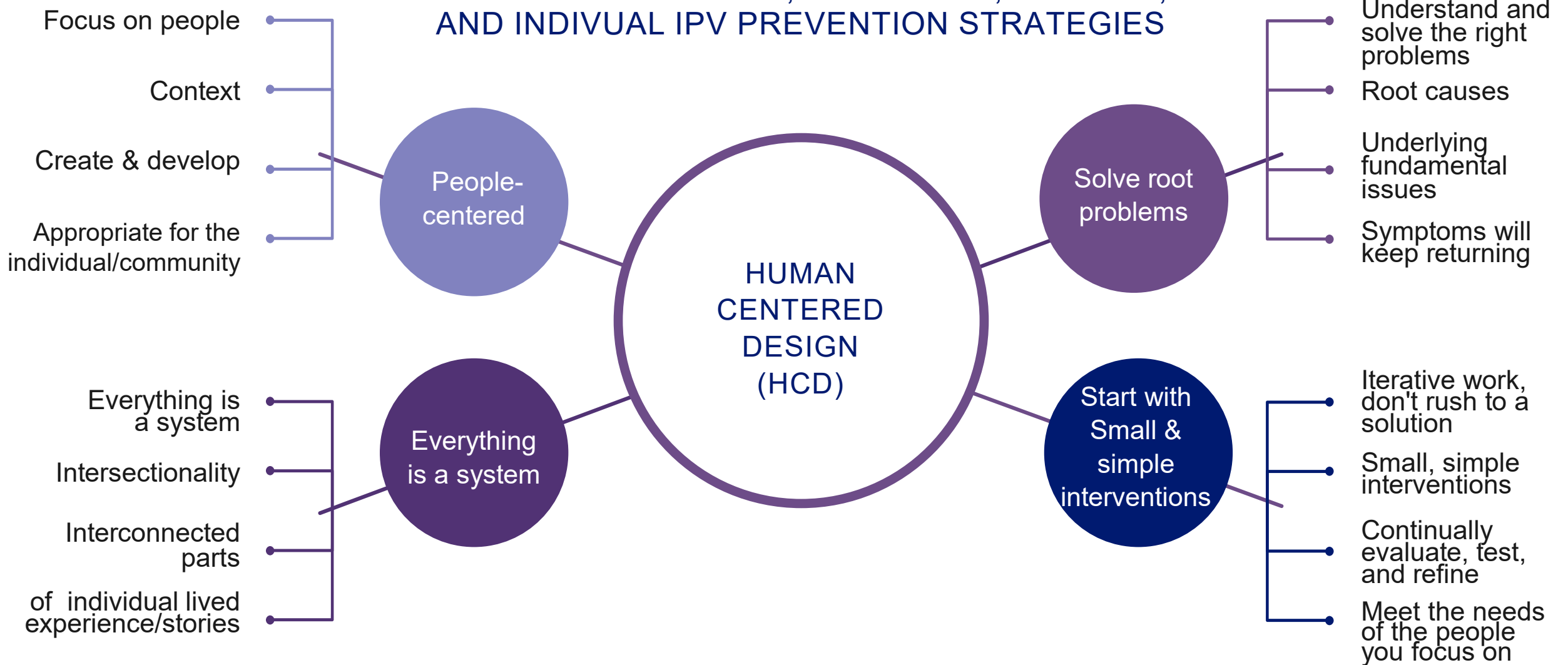
of common enemy intimacy/connection. – Just like coping, can create an enemy out of strategies used to regulate our nervous systems. We look to barriers as the enemy, it is not the barrier itself it's the environment that fosters the barrier, the power of the why?

- AN ENVIRONMENT OF

co-collaboration among preventionists and communities. Framework for how they can implement these strategies into their own agencies

IPV Prevention Strategies Using Inclusive Models and Methods

DEVELOPING GLOBAL, COMMUNAL, FAMILIAL, AND INDIVIDUAL IPV PREVENTION STRATEGIES



PARTICIPATORY APPROACH TO PREVENTION

Community Advisory Board (CAB)

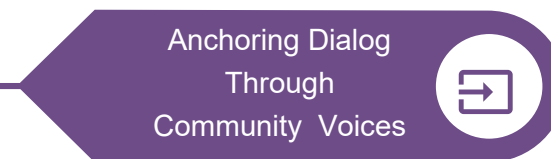
Stakeholders - Reps from community orgs

CAB determines content

Provide resources and feedback used to inform



Participatory Co-Design



Anchoring Dialog Through Community Voices



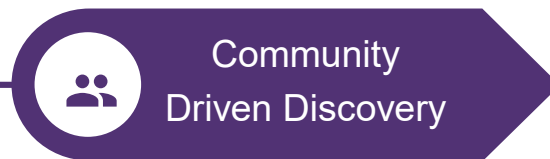
ASSESMENT STRATEGY
COMMUNITY BASED
PARTICIPATORY RESEARCH
(CBPR)

Community lead research efforts

Increases comfort and honesty among participants

Insights from their own first-hand knowledge

Gather relevant information more quickly



Community Driven Discovery



Idea Generation

Strategies to engage participants in reciprocal dialogues

Solutions to violence exposure

Key speakers - range of constituencies
"Meeting of the Minds"

Bi-cultural, personal, and professional perspectives

Small group reciprocal dialog

Written responses to prompts

Problem-focused to solution-focused

HCD Story boarding

Dialogue, Reflection, and Action; creating a continuous feedback loop, to reduce health disparities and increase equity.

WHAT'S THE WHY?



- **BREAKOUT ROOMS**

- 1 asks why
- 1 answers
- Try for 6 rounds of why
- Switch roles for the next question
 - Why are there so many unhoused youth?
 - Why is human trafficking so prevalent?
 - Why are parents/caregivers so freaked out by Sex Ed?

PREVENTION AT THE PARTNERSHIP



MELODIE KRUSPODIN

PREVENTION
SPECIALIST

(SHE/HER/ELLA)

MELODIE@CPEDV.ORG



KIMMIE REMIS

PREVENTION SPECIALIST

(SHE/HER)

KIMMIE@CPEDV.ORG

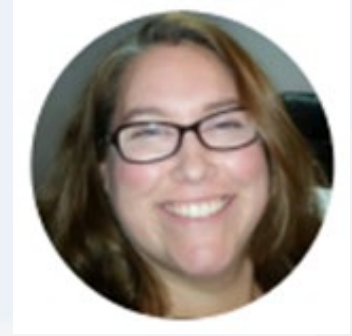


JENNIFER M. KHALIFA PONCE

DIRECTOR OF PREVENTION
STRATEGIES

(SHE/HER)

JENNIFER@CPEDV.ORG



MIRANDA STIERS

ASSOCIATE DIRECTOR OF
PREVENTION

(THEY/THEM)

MIRANDA@CPEDV.ORG